

NEW MOTOR VEHICLE REGISTRATIONS

AUSTRALIA
PRELIMINARY

EMBARGOED UNTIL 11:30AM WED 24 AUGUST 1994

THIS MONTH'S KEY FIGURES

TREND ESTIMATES

	Jul 94	monthly % change	annual % change
Total new motor vehicle registrations	52 018	1.0	13.3
Passenger vehicles	41 969	0.4	9.7
Other vehicles	10 049	3.2	31.0

SEASONALLY ADJUSTED

	Jul 94	monthly % change	annual % change
Total new motor vehicle registrations	52 028	-0.2	18.2
Passenger vehicles	42 656	2.8	16.2
Other vehicles	9 371	-12.1	28.6

ORIGINAL ESTIMATES

	Jul 94	monthly % change	annual % change
Total new motor vehicle registrations	51 928	-10.4	14.3
Passenger vehicles	42 279	-6.5	12.1
Other vehicles	9 649	-24.1	25.0

THIS MONTH'S KEY POINTS

TREND ESTIMATES

- The sustained rises in the trend series for passenger vehicles since September 1993 and particularly in other vehicles since November have lifted the total trend to 13.3 per cent above the level of July 1993. The trend level for other vehicles is now 31.0 per cent higher than the previous July while passenger vehicles are 9.7 per cent higher. The trend level for July 1994 is higher than for July 1993 in all States and Territories except for the Australian Capital Territory.

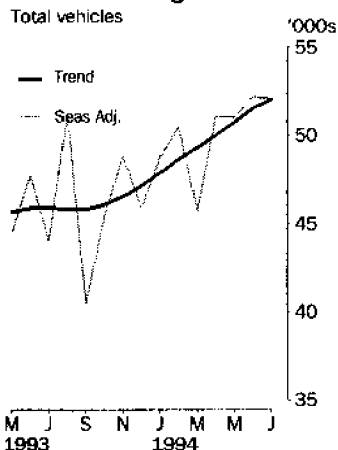
SEASONALLY ADJUSTED ESTIMATES

- The large fall in seasonally adjusted other vehicle registrations of 12.1 per cent more than offset the 2.8 per cent rise in passenger vehicles to show a small fall in total registrations. Seasonally adjusted registrations were down in all States except Queensland where there was a rise of 24.4 per cent.

ORIGINAL ESTIMATES

- Registrations fell in all vehicle types and in all States except Queensland where total registrations rose by 11.1 per cent. Registrations of light commercial vehicles fell by 26.1 per cent, buses by 22.2 per cent and passenger vehicles by 6.5 per cent.

New vehicle registrations



INQUIRIES

- For further information about these and related statistics, contact Kevin Yeadon on 06 252 6255, or any ABS Office.

NEW MOTOR VEHICLE NOTES

FORTHCOMING ISSUES

ISSUE	RELEASE DATE
August 1994	21 September 1994
September 1994	26 October 1994
October 1994	23 November 1994

CHANGES IN THIS ISSUE

There are no changes in this issue.

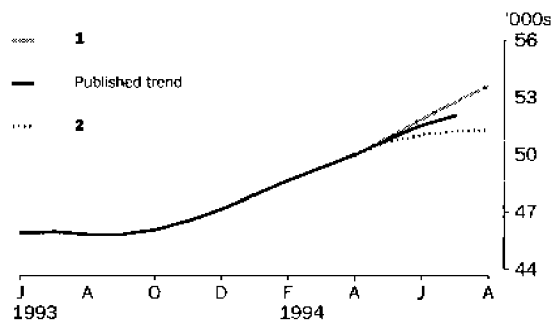
TREND REVISIONS

The most recent trend estimates are likely to be revised when new seasonally adjusted estimates become available.

The graph below presents the effect of two possible scenarios on the previous trend estimates:

- 1** The August seasonally adjusted estimate for total vehicle registrations is higher than the July seasonally adjusted estimate by 5.4%.
- 2** The August seasonally adjusted estimate for total vehicle registrations is lower than the July seasonally adjusted estimate by -5.4%.

The percentage change of 5.4% was chosen because the average absolute percentage change, based on the last 6 years, has been 5.4%.



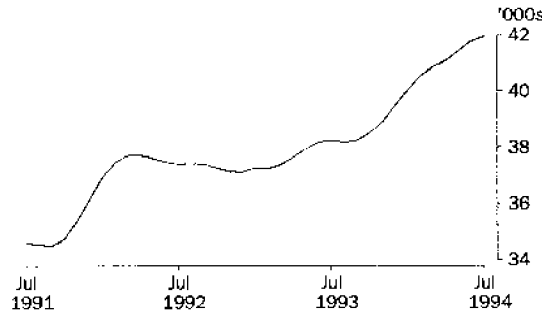
A rise of 5.4 per cent in the seasonally adjusted series in August 1994 would see the revised trend series continue to rise at the rate shown over the previous ten months. A fall of the same magnitude in August would lead to a flattening in the revised trend from July.

IAN CASTLES
AUSTRALIAN STATISTICIAN

VEHICLE REGISTRATIONS BY TYPE: Trend series

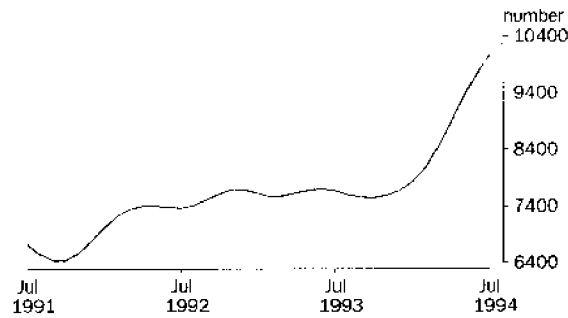
PASSENGER VEHICLES

The trend has been rising steadily since September 1993 and is now 9.7 per cent above the level for July 1993 and just 2.9 per cent below the most recent peak in April 1990. The rate of increase in the trend has moderated over recent months.



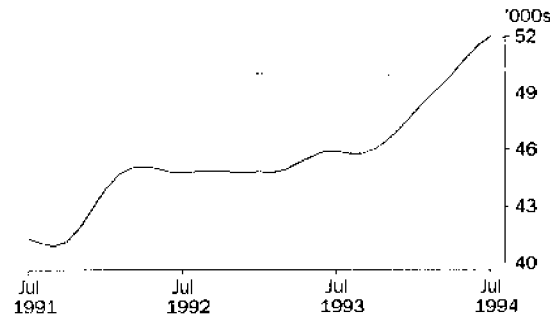
OTHER VEHICLES

Since November 1993 the trend has been rising strongly and is now 31.0 per cent above the level of July 1993. In the most recent two months the rate of increase in the trend has slowed slightly. The trend level for other vehicles is still 13.9 per cent below the most recent peak in October 1989.



TOTAL VEHICLES (EXCLUDING MOTOR CYCLES)

Although the trends for both passenger vehicles and other vehicles have been rising, the strength of the rise in other vehicles has lifted the trend level for total registrations to 13.3 per cent above the level for the previous July. The trend level remains 4.3 per cent below the most recent peak in April 1990.





NEW MOTOR VEHICLES, Registrations By Type: All Series

Month	Passenger vehicles	Other vehicles	Total
ORIGINAL			
1993			
May	36 865	7 936	44 801
June	42 570	10 742	53 312
July	37 719	7 719	45 438
August	45 125	7 326	52 451
September	35 681	6 864	42 545
October	37 162	7 524	44 686
November	41 662	8 446	50 108
December	40 746	7 791	48 537
1994			
January	30 967	5 695	36 662
February	38 859	7 088	45 947
March	43 715	8 971	52 686
April	36 003	8 052	44 055
May	43 102	10 096	53 198
June	45 240	12 713	57 953
July	42 279	9 649	51 928
SEASONALLY ADJUSTED			
1993			
May	37 014	7 465	44 479
June	38 670	9 022	47 692
July	36 722	7 289	44 011
August	43 619	7 534	51 153
September	33 575	6 872	40 447
October	37 929	7 528	45 457
November	40 637	8 176	48 813
December	37 871	7 983	45 854
1994			
January	41 163	7 599	48 762
February	42 736	7 752	50 487
March	37 938	7 816	45 754
April	41 682	9 381	51 063
May	41 704	9 309	51 013
June	41 482	10 656	52 138
July	42 656	9 371	52 028
TREND ESTIMATES ¹			
1993			
May	37 941	7 682	45 623
June	38 172	7 702	45 874
July	38 246	7 670	45 916
August	38 179	7 601	45 781
September	38 236	7 555	45 790
October	38 487	7 544	46 031
November	38 908	7 583	46 492
December	39 458	7 668	47 125
1994			
January	40 044	7 831	47 875
February	40 543	8 079	48 622
March	40 847	8 442	49 288
April	41 080	8 888	49 967
May	41 411	9 342	50 753
June	41 787	9 733	51 520
July	41 969	10 049	52 018

¹ Trend estimates for January 1994 to June 1994 have been revised.

NEW MOTOR VEHICLES, Registrations By Type: Original

Month	Passenger vehicles	Light commercial vehicles	Rigid trucks	Articulated trucks	Non-freight carrying trucks	Buses	Total (excludes motor cycles)	Motor cycles
1993								
May	36 865	6 467	819	222	55	373	44 801	1 287
June	42 570	8 879	982	293	68	520	53 312	1 326
July	37 719	6 275	809	206	87	342	45 438	1 250
August	45 125	5 868	802	237	99	320	52 451	1 417
September	35 681	5 558	771	222	63	250	42 545	1 353
October	37 162	6 094	823	262	64	281	44 686	1 323
November	41 662	6 948	811	302	78	307	50 108	1 811
December	40 746	6 309	851	255	70	306	48 537	1 543
1994								
January	30 967	4 686	508	176	23	302	36 662	1 481
February	38 859	5 813	710	214	43	308	45 947	1 613
March	43 715	7 432	882	265	49	343	52 686	1 614
April	36 003	6 794	676	256	50	276	44 055	1 285
May	43 102	8 424	946	323	66	337	53 198	1 315
June	45 240	10 517	1 222	428	104	442	57 953	1 420
July	42 279	7 775	1 079	396	55	344	51 928	1 348

NEW MOTOR VEHICLES, Registrations By State: All Series

Month	New South Wales	Victoria	Queensland	South Australia	Western Australia	Tasmania	Northern Territory	Australian Capital Territory	Australia
ORIGINAL									
1993									
May	16 263	10 286	8 121	3 170	4 522	989	546	904	44 801
June	18 028	11 660	11 234	3 582	6 009	1 078	699	1 022	53 312
July	15 148	10 784	9 123	3 187	4 624	992	555	1 025	45 438
August	18 495	11 622	10 169	3 549	5 595	1 300	462	1 259	52 451
September	14 303	9 894	7 921	3 141	4 743	985	473	1 085	42 545
October	14 487	10 629	9 397	3 068	4 581	1 065	486	973	44 686
November	18 628	11 248	8 585	3 490	5 361	1 233	548	1 015	50 108
December	16 130	11 608	9 421	3 172	5 470	1 333	448	955	48 537
1994									
January	12 896	8 173	7 373	2 239	4 078	766	299	838	36 662
February	16 295	10 700	8 455	3 187	5 016	929	434	931	45 947
March	18 775	12 713	9 167	3 645	5 702	967	586	1 131	52 686
April	14 642	9 885	10 447	2 651	4 246	811	595	778	44 055
May	19 996	11 950	10 149	3 235	5 327	1 017	562	962	53 198
June	20 719	13 246	10 476	4 022	6 332	1 243	712	1 203	57 953
July	17 640	11 718	11 637	3 393	4 883	1 152	600	905	51 928
SEASONALLY ADJUSTED									
1993									
May	15 055	10 410	8 404	3 326	4 690	1 091	528	976	44 479
June	15 878	10 584	9 942	3 299	5 458	1 078	554	899	47 692
July	14 696	10 230	8 760	3 164	4 617	1 008	528	1 008	44 011
August	17 972	11 085	10 434	3 347	5 438	1 365	429	1 082	51 153
September	13 993	9 436	7 114	2 907	4 699	823	467	1 008	40 447
October	15 201	10 698	9 324	3 009	4 608	1 117	493	1 008	45 457
November	17 506	11 242	8 971	3 214	5 195	1 249	546	889	48 813
December	16 177	10 849	8 318	3 046	5 196	855	487	927	45 854
1994									
January	16 857	11 479	9 788	3 031	4 861	1 083	421	1 242	48 762
February	18 040	11 449	9 415	3 508	5 370	1 122	528	1 056	50 487
March	15 875	11 477	7 774	3 221	5 002	900	504	1 000	45 754
April	17 602	10 831	12 451	2 990	4 678	992	621	899	51 063
May	18 031	11 470	10 212	3 269	5 441	1 084	530	976	51 013
June	18 266	12 197	9 270	3 746	5 702	1 245	582	1 130	52 138
July	17 814	11 353	11 535	3 514	5 140	1 207	579	887	52 028
TREND ESTIMATES¹									
1993									
May	15 700	10 429	8 926	3 205	4 834	1 082	512	935	45 623
June	15 658	10 440	9 057	3 228	4 917	1 097	514	963	45 874
July	15 611	10 428	9 089	3 221	4 972	1 103	507	985	45 916
August	15 603	10 418	9 022	3 169	4 977	1 098	497	996	45 781
September	15 743	10 467	8 933	3 108	4 962	1 089	488	999	45 790
October	15 984	10 627	8 810	3 080	4 965	1 080	482	1 004	46 031
November	16 259	10 855	8 741	3 090	4 986	1 067	481	1 012	46 492
December	16 531	11 062	8 854	3 116	5 012	1 045	487	1 020	47 125
1994									
January	16 809	11 226	9 102	3 147	5 043	1 023	497	1 028	47 875
February	17 066	11 328	9 413	3 185	5 073	1 015	510	1 032	48 622
March	17 269	11 374	9 727	3 231	5 111	1 024	527	1 026	49 288
April	17 455	11 420	10 038	3 289	5 157	1 052	547	1 010	49 967
May	17 687	11 490	10 336	3 363	5 226	1 095	565	992	50 753
June	17 917	11 565	10 597	3 443	5 298	1 144	579	977	51 520
July	18 053	11 602	10 761	3 514	5 367	1 177	590	955	52 018

¹ Trend estimates for January 1994 to June 1994 have been revised.

NEW PASSENGER VEHICLES, Selected Make/Models: **Original**— July 1994

Make/Model	New South Wales	Victoria	Queensland	South Australia	Western Australia	Tasmania	Northern Territory	Australian Capital Territory	Australia
Ford									
Falcon/Fairmont	1 832	1 863	1 176	355	534	85	52	116	6 013
Laser	691	435	317	130	186	50	25	57	1 891
Festiva	233	75	143	75	106	12	5	10	659
Other	244	243	162	56	58	7	6	9	785
Total	3 000	2 616	1 798	616	884	154	88	192	9 348
Holden									
Commodore/Calais	2 339	1 679	1 319	551	542	135	64	149	6 778
Barina	286	163	199	65	112	22	4	27	878
Apollo	194	104	105	66	64	10	1	17	561
Other	306	238	139	86	96	16	3	12	896
Total	3 125	2 184	1 762	768	814	183	72	205	9 113
Hyundai									
Excel	389	236	313	43	245	16	14	12	1 268
Sonata	167	84	100	8	56	5	2	4	426
Lantra	120	28	45	11	23	8	9	3	247
Other	25	8	11	5	10	2	1	2	64
Total	701	356	469	67	334	31	26	21	2 005
Mazda									
121	344	108	170	61	50	10	11	38	792
626	156	120	70	14	28	4	3	12	407
323	112	96	56	22	24	4	2	5	321
Other	67	30	38	7	13	4	..	3	162
Total	679	354	334	104	115	22	16	58	1 682
Mitsubishi									
Magna	871	796	506	388	254	76	16	66	2 973
Lancer	269	231	209	62	95	13	13	21	913
Pajero	216	87	185	28	67	7	3	7	600
Other	148	111	86	49	38	7	3	6	448
Total	1 504	1 225	986	527	454	103	35	100	4 934
Nissan									
Pulsar	207	171	184	28	85	5	6	14	700
Patrol	95	76	84	18	43	3	5	3	327
Bluebird	93	44	67	16	22	3	1	4	250
Other	57	42	39	4	24	5	..	2	173
Total	452	333	374	66	174	16	12	23	1 450
Toyota									
Camry	885	469	598	162	147	89	46	29	2 425
Corolla	450	204	354	69	138	190	25	24	1 454
Landcruiser	335	233	372	40	128	20	23	6	1 157
Other	879	416	433	102	200	27	27	28	2 112
Total	2 549	1 322	1 757	373	613	326	121	87	7 148

EXPLANATORY NOTES

INTRODUCTION

- 1** This publication presents monthly data for registrations of new motor vehicles.
- 2** The statistics in this publication are based on procedures using the Vehicle Identification Number (VIN), adopted by the State and Territory motor vehicle registration authorities. The VIN system allows more accurate classification of vehicles. In the case of some States, data processed using the VIN are not strictly comparable with data processed prior to December 1990.

SCOPE AND COVERAGE

- 3** Motor vehicle registration statistics are obtained from the State and Territory motor vehicle registration authorities. The statistics reflect the information recorded in registration documents. With the exception of Queensland, the statistics shown do not depart significantly from actual registrations during the period.

In the case of Queensland, a number of registrations processed in a month actually relate to vehicles registered prior to that month. Because of the lags from purchase to registration, and processing lags, the published statistics for the period can vary from actual sales of new vehicles for the same period.

- 4** The scope of the statistics:

- includes:

- passenger vehicles
- light commercial vehicles
- trucks
- buses
- motorcycles
- vehicles with diplomatic and consular plates
- State and Commonwealth owned vehicles

- excludes:

- vehicles belonging to the defence forces
- recreation vehicles such as trail bikes and sand dune buggies (in those States where registration is required).

SEASONAL ADJUSTMENT

- 5** Seasonal adjustment is a means of removing the estimated effects of normal seasonal variation from the series so that the effects of other influences can be more clearly recognised.

- 6** Seasonal adjustment does not remove from the series the effect of irregular or non-seasonal influences (e.g. the introduction of new models, processing delays, industrial disputes).

- 7** Irregular influences that are highly volatile can make it difficult to interpret the series even after adjustment for seasonal variation.

- 8** Seasonally adjusted series are calculated for the 'Passenger vehicles', 'Other vehicles' and 'Total vehicles' series for each State and Territory and are aggregated to obtain the total for Australia.

- 9** Seasonal adjustment factors are analysed and revised as necessary annually. (For further details refer to the Explanatory Notes of Cat No. 9303.0.)

TREND ESTIMATES

10 The smoothing of seasonally adjusted series to create trend estimates reduces the impact of the irregular component of the seasonally adjusted series. The trend estimates are derived by applying a 13-term Henderson-weighted moving average to the respective seasonally adjusted series. These trend series are used to analyse the underlying behaviour of the series over time.

11 While this smoothing technique enables trend estimates to be produced for the latest month, it does result in revisions to the trend estimates for the most recent months as data for subsequent months become available. Generally subsequent revisions become smaller and after three months, usually have a negligible impact on the series. Changes in the original data and re-estimation of seasonal factors may also lead to revisions to the trend. For more information, see *A Guide to Smoothing Time Series—Estimates of Trend* (1316.0) and *Time Series Decomposition—An Overview* (1317.0)

RELATED PUBLICATIONS

12 A more detailed break-up of the monthly figures presented here is available in *Motor Vehicle Registrations, Australia* (9303.0). This publication is generally available within three weeks of the issue of this publication. Data on total vehicle registrations, both new and re-registrations, is available in *Motor Vehicle Census, Australia, 30 June 1993* (9309.0)

SYMBOLS AND OTHER USAGES

n.p. not available for publication, but included in totals

GLOSSARY

- Articulated trucks** Vehicles constructed primarily for load carrying consisting of a prime mover having no significant load carrying area but with a turn table device which can be linked to a trailer. With or without a trailer the gross combination mass will be 3.5 tonnes or more.
- Buses** Includes all passenger vehicles having more than nine seats, including the driver.
- Light commercial vehicles** Describes goods carrying vehicles less than 3.5 tonnes gross vehicle mass. Included are utilities, panel vans, cab-chassis and forward control vehicles (whether four-wheel drive or not).
- Motor cycles** Includes 2 and 3 wheeled mopeds, scooters, motor tricycles and motor cycles with side cars.
- Non-freight carrying trucks** Includes specialist vehicles such as ambulances, mobile cranes or vehicles fitted with special purpose equipment and having no goods carrying capacity.
- Passenger vehicles** Includes cars, station wagons, four-wheel drive passenger vehicles and forward control passenger vehicles with up to nine seats (including the driver).
- Registrations** This includes all registrations processed by the motor vehicle registration authorities in the States and Territories during the relevant period.
- Rigid trucks** Vehicles constructed primarily for load carrying with a gross vehicle mass of 3.5 tonnes or more.
- VIN** The Vehicle Identification Number (VIN) uniquely identifies each vehicle. Embedded in the number are details of make and model together with other relevant information about the vehicle. The VIN is collected by the motor vehicle registration authorities at the time of registration.



FOR MORE INFORMATION

The ABS publishes a wide range of information on Australia's economic and social conditions. A catalogue of publications and products is available from any of our offices (see below).

INFORMATION CONSULTANCY SERVICES

Special tables or in-depth data investigations are provided by the ABS Information Consultancy Service in each of our offices (see below).

ELECTRONIC DATA SERVICES

A large range of data is available via on-line services, diskette, magnetic tape, tape cartridge and CD ROM. For more details about our electronic data services, contact any ABS office (see below).

BOOKSHOP AND SUBSCRIPTIONS

There are over 500 titles available from the ABS Bookshops in each of our offices. You can also receive any of our publications on a regular basis. Join our subscription mailing service and have your publications mailed to you in Australia at no additional cost. Telephone our Publications Subscription Service toll free Australia wide on 008 0206 08.

GENERAL SALES AND INQUIRIES

- * Sydney 02 268 4611
- * Melbourne 03 615 7000
- * Brisbane 07 222 6351
- * Perth 09 360 5140
- * Adelaide 08 237 7100
- * Hobart 002 20 5800
- * Darwin 089 43 2111
- * Canberra 06 252 6007

- Information Services, ABS
PO Box 10, Belconnen ACT 2616



2930100007945

ISSN 0819-9795

RRP \$12.00